

# 2010 Asian Games - Short



**Oil Pattern Distance:** 35 Feet  
**Forward Oil Total:** 14.88 mL  
**Forward Boards Crossed:** 372 Boards  
**Reverse Oil Total:** 10.56 mL  
**Reverse Boards Crossed:** 264 Boards  
**Oil Per Board:** 40 uL  
**Volume Oil Total:** 25.44 mL  
**Total Boards Crossed:** 636 Boards

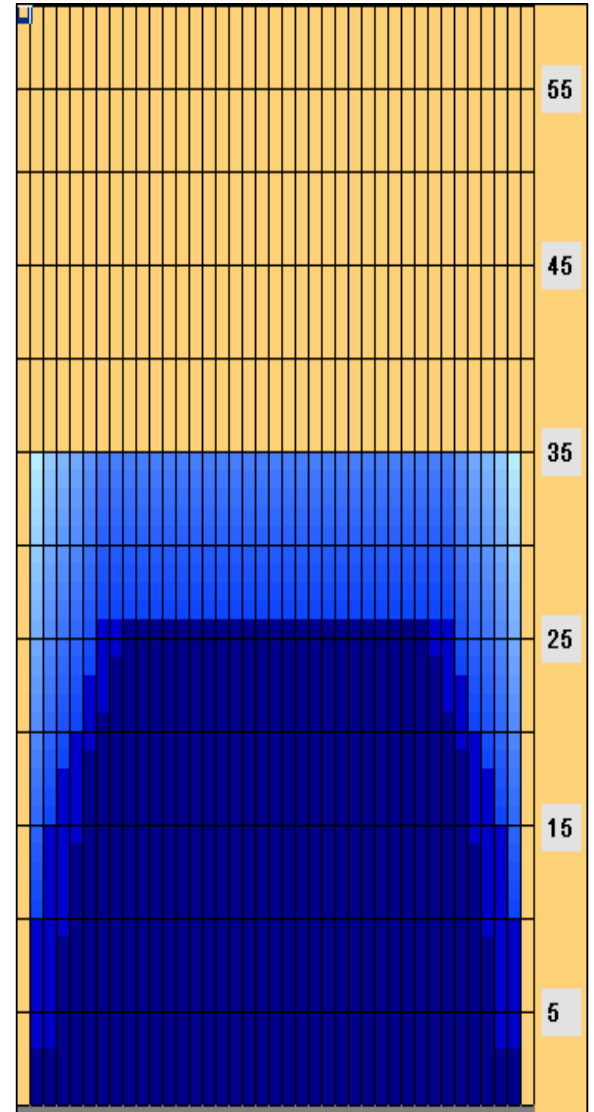
	Start	Stop	Loads	Speed	Crossed	Start	End	Feet	T.Oil
1	2L	2R	3	14	111	0.0	3.9	3.9	4440
2	4L	4R	2	18	66	3.9	9.0	5.1	2640
3	5L	5R	2	18	62	9.0	14.1	5.1	2480
4	6L	6R	2	18	58	14.1	19.2	5.1	2320
5	7L	7R	1	18	27	19.2	21.7	2.5	1080
6	8L	8R	1	18	25	21.7	24.2	2.5	1000
7	9L	9R	1	18	23	24.2	26.7	2.5	920
8	2L	2R	0	18	0	26.7	31.0	4.3	0
9	2L	2R	0	22	0	31.0	35.0	4.0	0

	Start	Stop	Loads	Speed	Crossed	Start	End	Feet	T.Oil
1	2L	2R	0	30	0	35.0	26.0	-9.0	0
2	7L	7R	1	22	27	26.0	22.9	-3.1	1080
3	6L	6R	1	18	29	22.9	20.4	-2.5	1160
4	5L	5R	1	18	31	20.4	17.9	-2.5	1240
5	4L	4R	1	18	33	17.9	15.4	-2.5	1320
6	3L	3R	2	18	70	15.4	10.3	-5.1	2800
7	2L	2R	2	14	74	10.3	6.4	-3.9	2960
8	2L	2R	0	10	0	6.4	0.0	-6.4	0

Conditioner:  
Kegel

TransferType:  
Transfer Brush

- Forward
- Reverse
- Combined
- Buff



Reverse Brush Drop at 30 feet

Item	3L-7L:18L-18R	8L-12L:18L-18R	13L-17L:18L-18R	18L-18R:17R-13R	18L-18R:12R-8R	18L-18R:7R-3R
Description	Outside Track:Middle	Middle Track:Middle	Inside Track:Middle	Middle: Inside Track	Middle:Middle Track	Middle:Outside Track
Track Zone Ratio	1.56	1.01	1	1	1.01	1.56

