

# Z#4-11.23JW\_2020 Team USA Trials Day 4 Women



**Oil Pattern Distance:** 33 Feet      **Reverse Brush Drop:** 33 Feet      **Oil Per Board:** 50 uL  
**Forward Oil Total:** 20.4 mL      **Reverse Oil Total:** 5.05 mL      **Volume Oil Total:** 25.45 mL  
**Forward Boards Crossed:** 408 Boards      **Reverse Boards Crossed:** 101 Boards      **Total Boards Crossed:** 509 Boards

	Start	Stop	Loads	Speed	Crossed	Start	End	Feet	T.Oil
1	2L	2R	4	10	148	0.0	4.2	4.2	7400
2	4L	4R	6	14	198	4.2	16.1	11.9	9900
3	5L	5R	2	18	62	16.1	21.2	5.1	3100
4	2L	2R	0	22	0	21.2	33.0	11.8	0

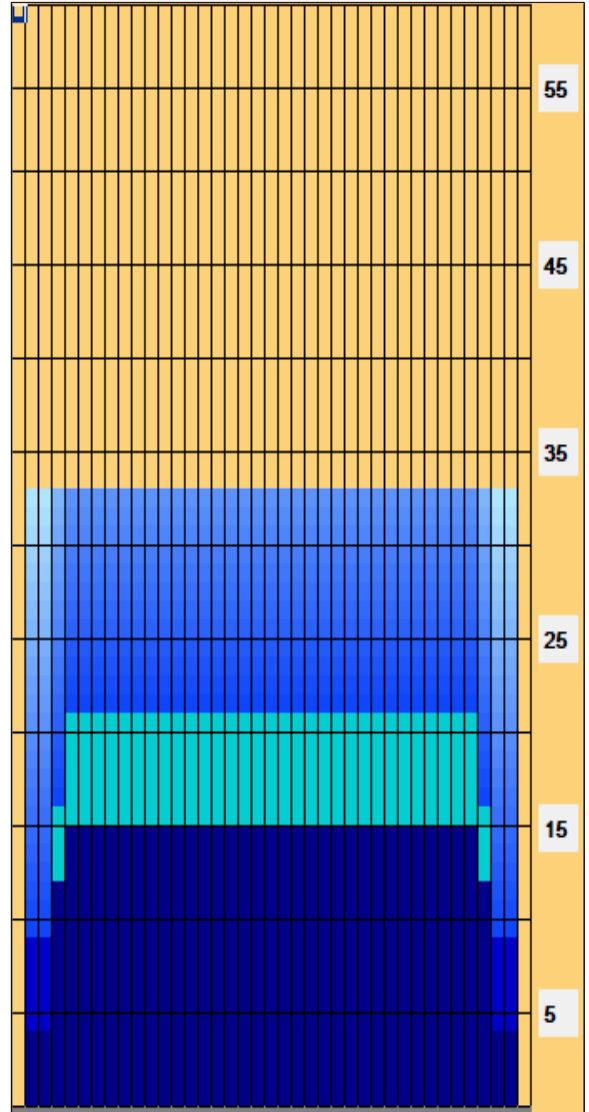
Forward Reverse More

	Start	Stop	Loads	Speed	Crossed	Start	End	Feet	T.Oil
1	2L	2R	0	30	0	33.0	15.0	-18.0	0
2	5L	5R	1	22	31	15.0	11.9	-3.1	1550
3	4L	4R	1	18	33	11.9	9.4	-2.5	1650
4	2L	2R	1	18	37	9.4	6.9	-2.5	1850
5	2L	2R	0	14	0	6.9	0.0	-6.9	0

Forward Reverse More

Conditioner:  
 Type In or Select One  
  
 TransferType:  
 Type In or Select One

- Forward
- Reverse
- Combined
- Buff



Item	3L-7L:18L-18R	8L-12L:18L-18R	13L-17L:18L-18R	18L-18R:17R-13R	18L-18R:12R-8R	18L-18R:7R-3R
Description	Outside Track:Middle	Middle Track:Middle	Inside Track:Middle	Middle: Inside Track	Middle:Middle Track	Middle:Outside Track
Track Zone Ratio	1.21	1	1	1	1	1.21

